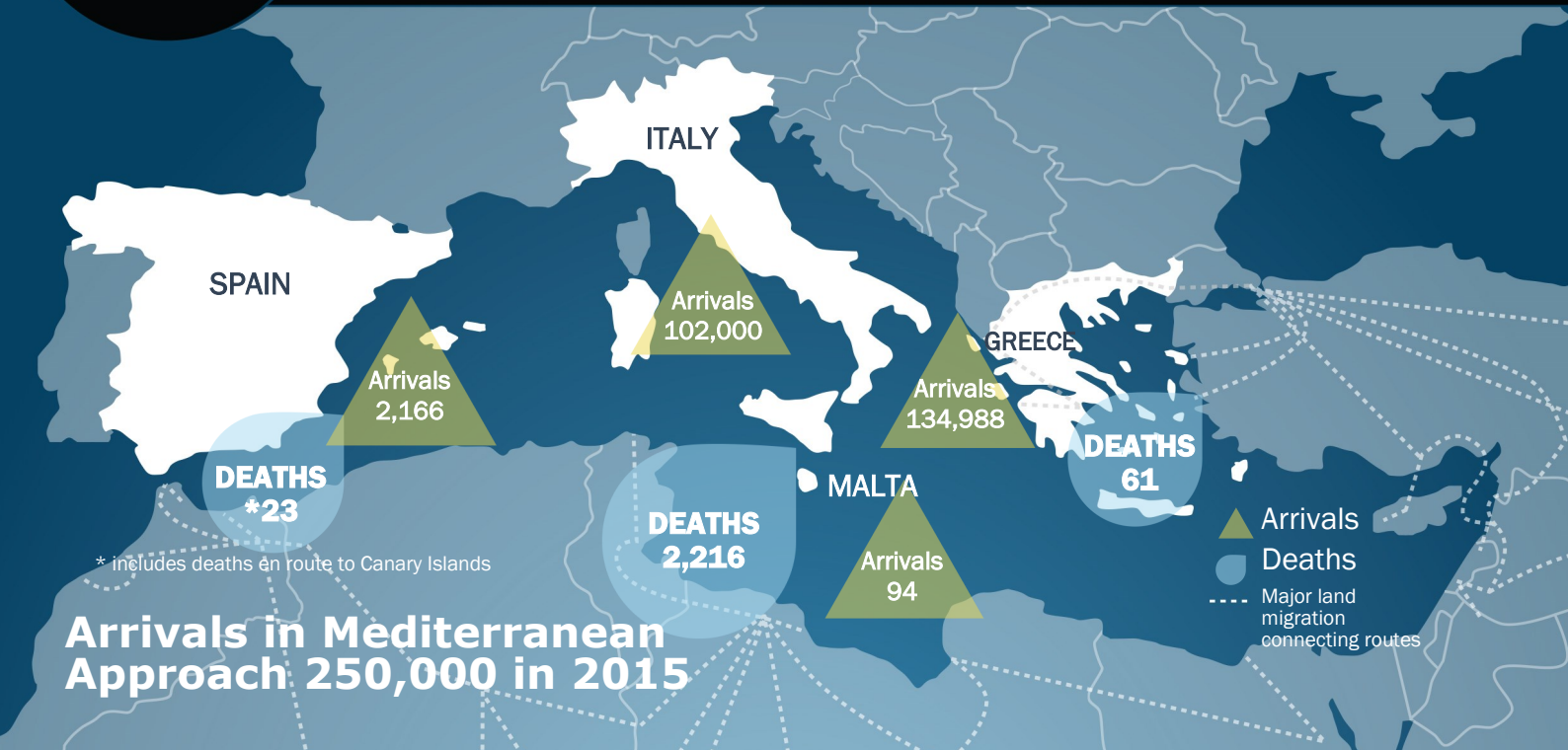




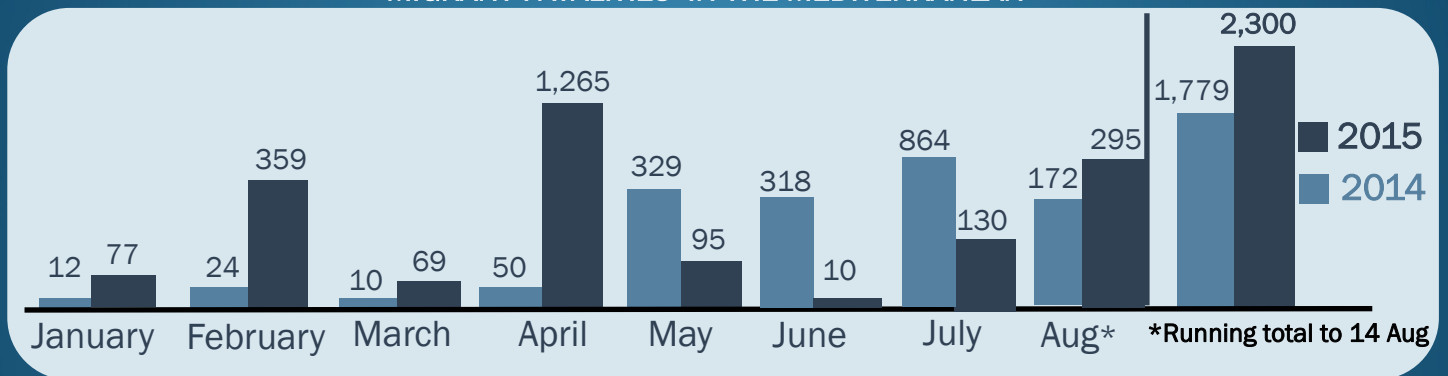
Mediterranean Update

Missing Migrants Project 14 August 2015



*Arrivals figures refer to irregular maritime arrivals only

MIGRANT FATALITIES IN THE MEDITERRANEAN



MIGRANT MARITIME ARRIVALS 2015

Total Arrivals: (to date) 239,248

Italy	102,000
Greece	134,988
Spain	2,166
Malta	94
Total	239,248

Estimates based on data from respective governments and IOM field offices as of 14/8/2015.

TOP FIVE COUNTRIES OF ORIGIN

1 January–31 July 2015

Destination

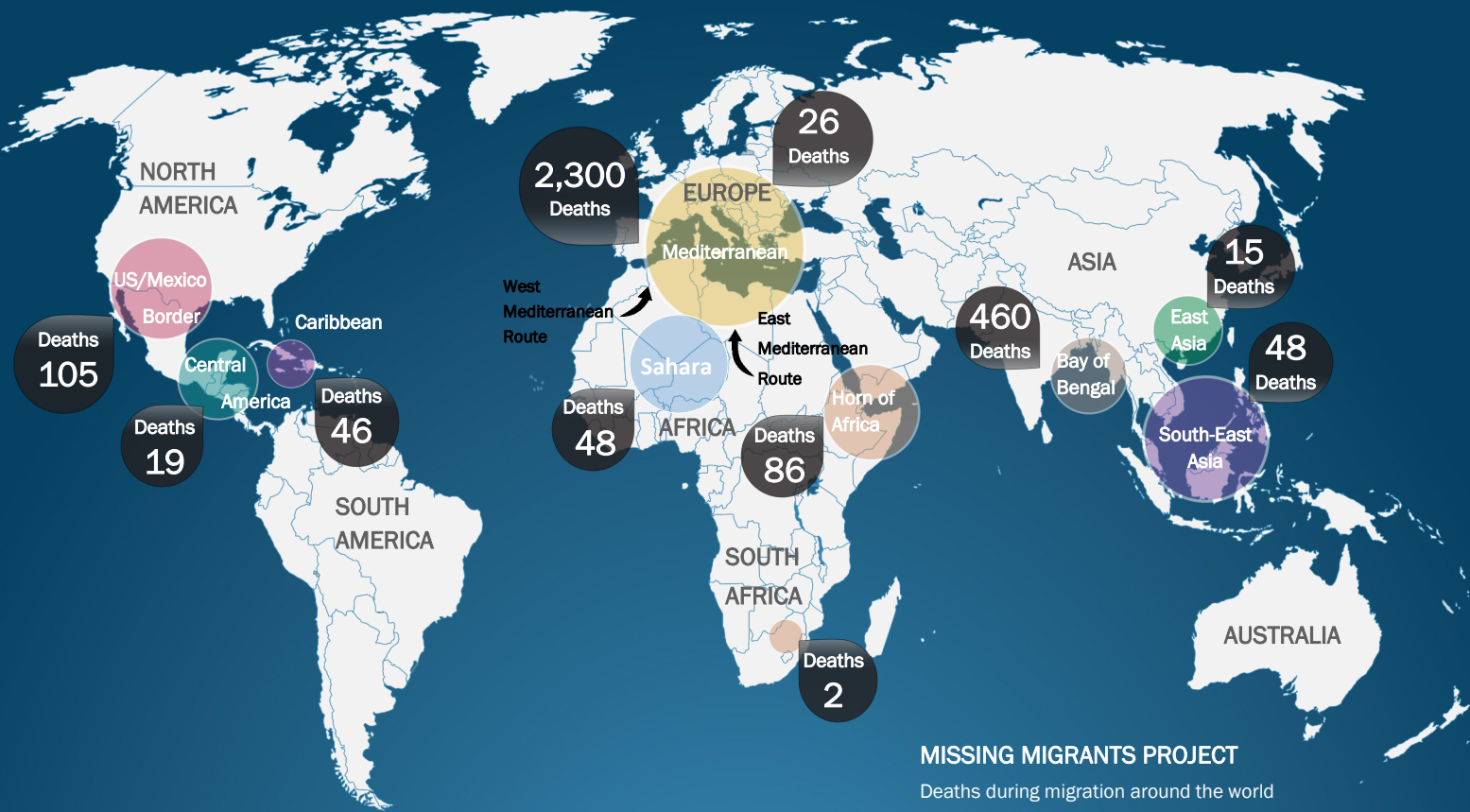
Origin Country	Greece	Italy	Malta	Spain	Total
Syria	88,204	4,271	0	n.a.	92,475
Eritrea	282	18,676	0	n.a.	18,958
Afghanistan	32,414	0	0	n.a.	32,414
Nigeria	515	7,897	3	n.a.	8,412
Somalia	1,757	6,344	0	n.a.	8,101

The Missing Migrants Project is a joint initiative of IOM's Migration Research Division (MRD) and Media and Communications Division (MCD).

#MissingMigrants

MissingMigrants.iom.int

GLOBAL OVERVIEW: 3,155 MIGRANT DEATHS TO DATE IN 2015



KEY DATA ON MIGRANT FATALITIES

The Missing Migrants Project is the only global database sharing key data on deceased and missing migrants around the world. The aim is to strengthen advocacy and support a more informed policy response.

SUPPORTING FAMILIES OF MISSING MIGRANTS

The project empowers families of the missing by providing information and guidance, including on identification of the missing and dead, with the aim of affirming the rights and dignity of migrants and their families.

GLOBAL INFORMATION HUB ON MIGRATION

The project underlines the global scale of the crisis by sharing key information on migrants dying along migratory routes around the world. The platform also engages feedback from migrants and families of the missing.

Deaths between 1 January to 14 August 2015

Regions	Deaths ^a
Mediterranean	2,300
Bay of Bengal	460
US/Mexico Border	105
Horn of Africa	86
Sahara	48
South-East Asia	48
Caribbean	46
Europe ^b	26
East Asia	15
Central America	19
Southern Africa	2
TOTAL	3,155

Legend:

(a) Figures refer to documented deaths. Documented instances, therefore, potentially depict only a small share of actual stock. This map represents a base minimum.

(b) Includes deaths in Northern Europe, Southeastern Europe, and Western Europe.

* Data compiled by IOM's Migration Research Division (MRD). All numbers are minimum estimates based on data from respective governments and IOM field offices as of 14/8/2015.

The Missing Migrants Project is a joint initiative of IOM's Migration Research Division (MRD) and Media and Communications Division (MCD).

#MissingMigrants

MissingMigrants.iom.int